

DACH

II PIĘTRO

I PIĘTRO

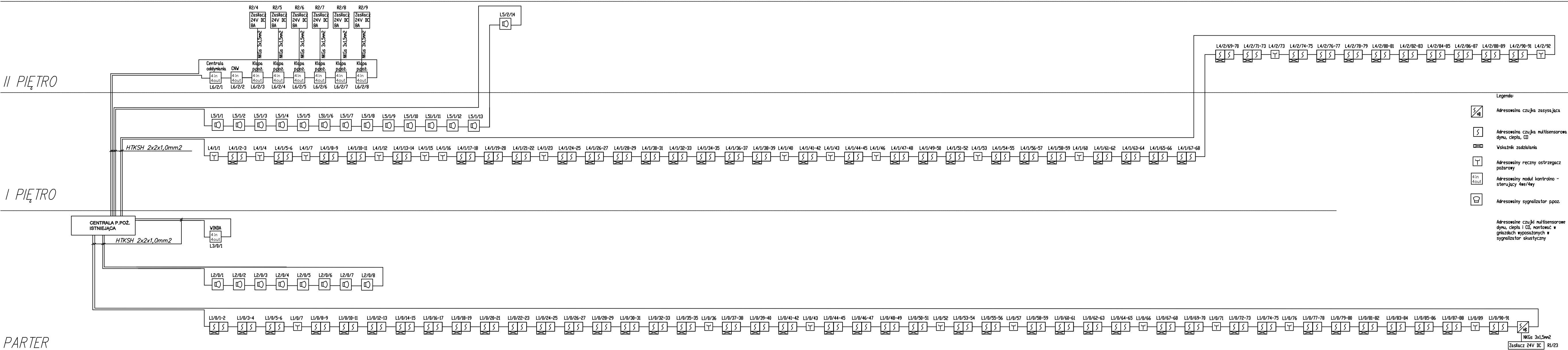
PARTER

Elementy systemu ppot. oznaczyć za pomocą dedykowanych oznaczeń. Nie dopuszcza się oznaczania elementów za pomocą taśm, itp. Dedykowane należy montować na dedykowanych uchwytych (opuszczających do kabli PH 90) w odstępach co najmniej 20 cm. Każde pomieszczenie, które może stanowić obszar zagrożenia pożarowego, należy zabezpieczyć czujką młtensensorową. Wszystkie urządzenia pożarowe należy podłączyć do systemu sygnalizacji pożaru.

Z jednego zasilacza zasilacz nie więcej niż 3 klasy pożarowej.

Elementy systemu pożarowego oznaczyć za pomocą BEZPOŚREDNIEGO OZNACZENIA. Nie dopuszcza się oznaczania za pomocą taśm, nalejek itp.

Dopuszcza się oznaczenie elementów w ramach jednej petli. Oznaczenie należy wykonać za pomocą BEZPOŚREDNIEGO OZNACZENIA. Zasilacz ppot. należy monitorować z centrali sygnalizacji pożaru. Wszystkie linie podłączenia do istniejącej centrali Centralne w razie konieczności rozciągnąć.



UWAGA:

- wszystkie wymiary należy sprawdzić na budowie i w terenie
- wykonawca jest zobowiązany sprawdzić wszystkie wymiary przed rozpoczęciem prac budowlanych, różnice w rysunkach i pomiarach oraz wszelkie rozbieżności i zmiany muszą być wyrażone z projektem przed rozpoczęciem robót
- rysunek rozpatrywać łącznie z poszczególnymi branżami
- zastosowane materiały i systemy w dokumentacji podane są jako przykładowe rozwiązania, mogą być zastąpione innymi, lecz o równoważnych lub wyższych parametrach, alternatywne rozwiązania należy uzgodnić z projektantem
- wszystkie technologie zastosowane w projekcie należy wykonać wg systemu i założeń producenta
- każde zmianę w stosunku do dokumentacji wymaga akceptacji projektanta na etapie realizacji
- powierzchnie pomieszczeń podane w planie surowym dach, bez wykończenia – powierzchnie malowane na wysokość 1m nad posadzką
- prędkość automatów do tego rysunku należy do architekturalnego bryła projektowanego MICRONET ART SPÓŁKA Z O.O.
- bez jego zgody rysunek nie może być wykorzystywany lub reprodukowany

| | | | |
|--|--|--|--|
| FIRMOWA PROJEKCJA: | | | |
| MICRONET ART | | | |
| ul. S. J. 100/100 | | | |
| INWESTOR: WOJEWÓDZKI OŚRODEK REHABILITACYJNY UL. ARMII KRAJOWEJ 24, 11-225 GÓRNO KLARECKIE | | | |
| NADZORCA: ROZBUDOWA OŚRODKÓW REHABILITACYJNYCH WOJEWÓDZKI OŚRODEK REHABILITACYJNY W GÓRNO KLARECKIM | | | |
| Jednostka wykonawcza: Instalacje 2002/02, 2003/02, 2004/02, 2005/02, 2006/02, 2007/02, 2008/02, 2009/02, 2010/02, 2011/02, 2012/02, 2013/02, 2014/02, 2015/02, 2016/02, 2017/02, 2018/02, 2019/02, 2020/02, 2021/02, 2022/02, 2023/02, 2024/02, 2025/02, 2026/02, 2027/02, 2028/02, 2029/02, 2030/02, 2031/02, 2032/02, 2033/02, 2034/02, 2035/02, 2036/02, 2037/02, 2038/02, 2039/02, 2040/02, 2041/02, 2042/02, 2043/02, 2044/02, 2045/02, 2046/02, 2047/02, 2048/02, 2049/02, 2050/02, 2051/02, 2052/02, 2053/02, 2054/02, 2055/02, 2056/02, 2057/02, 2058/02, 2059/02, 2060/02, 2061/02, 2062/02, 2063/02, 2064/02, 2065/02, 2066/02, 2067/02, 2068/02, 2069/02, 2070/02, 2071/02, 2072/02, 2073/02, 2074/02, 2075/02, 2076/02, 2077/02, 2078/02, 2079/02, 2080/02, 2081/02, 2082/02, 2083/02, 2084/02, 2085/02, 2086/02, 2087/02, 2088/02, 2089/02, 2090/02, 2091/02, 2092/02, 2093/02, 2094/02, 2095/02, 2096/02, 2097/02, 2098/02, 2099/02, 2100/02, 2101/02, 2102/02, 2103/02, 2104/02, 2105/02, 2106/02, 2107/02, 2108/02, 2109/02, 2110/02, 2111/02, 2112/02, 2113/02, 2114/02, 2115/02, 2116/02, 2117/02, 2118/02, 2119/02, 2120/02, 2121/02, 2122/02, 2123/02, 2124/02, 2125/02, 2126/02, 2127/02, 2128/02, 2129/02, 2130/02, 2131/02, 2132/02, 2133/02, 2134/02, 2135/02, 2136/02, 2137/02, 2138/02, 2139/02, 2140/02, 2141/02, 2142/02, 2143/02, 2144/02, 2145/02, 2146/02, 2147/02, 2148/02, 2149/02, 2150/02, 2151/02, 2152/02, 2153/02, 2154/02, 2155/02, 2156/02, 2157/02, 2158/02, 2159/02, 2160/02, 2161/02, 2162/02, 2163/02, 2164/02, 2165/02, 2166/02, 2167/02, 2168/02, 2169/02, 2170/02, 2171/02, 2172/02, 2173/02, 2174/02, 2175/02, 2176/02, 2177/02, 2178/02, 2179/02, 2180/02, 2181/02, 2182/02, 2183/02, 2184/02, 2185/02, 2186/02, 2187/02, 2188/02, 2189/02, 2190/02, 2191/02, 2192/02, 2193/02, 2194/02, 2195/02, 2196/02, 2197/02, 2198/02, 2199/02, 2200/02, 2201/02, 2202/02, 2203/02, 2204/02, 2205/02, 2206/02, 2207/02, 2208/02, 2209/02, 2210/02, 2211/02, 2212/02, 2213/02, 2214/02, 2215/02, 2216/02, 2217/02, 2218/02, 2219/02, 2220/02, 2221/02, 2222/02, 2223/02, 2224/02, 2225/02, 2226/02, 2227/02, 2228/02, 2229/02, 2230/02, 2231/02, 2232/02, 2233/02, 2234/02, 2235/02, 2236/02, 2237/02, 2238/02, 2239/02, 2240/02, 2241/02, 2242/02, 2243/02, 2244/02, 2245/02, 2246/02, 2247/02, 2248/02, 2249/02, 2250/02, 2251/02, 2252/02, 2253/02, 2254/02, 2255/02, 2256/02, 2257/02, 2258/02, 2259/02, 2260/02, 2261/02, 2262/02, 2263/02, 2264/02, 2265/02, 2266/02, 2267/02, 2268/02, 2269/02, 2270/02, 2271/02, 2272/02, 2273/02, 2274/02, 2275/02, 2276/02, 2277/02, 2278/02, 2279/02, 2280/02, 2281/02, 2282/02, 2283/02, 2284/02, 2285/02, 2286/02, 2287/02, 2288/02, 2289/02, 2290/02, 2291/02, 2292/02, 2293/02, 2294/02, 2295/02, 2296/02, 2297/02, 2298/02, 2299/02, 2300/02, 2301/02, 2302/02, 2303/02, 2304/02, 2305/02, 2306/02, 2307/02, 2308/02, 2309/02, 2310/02, 2311/02, 2312/02, 2313/02, 2314/02, 2315/02, 2316/02, 2317/02, 2318/02, 2319/02, 2320/02, 2321/02, 2322/02, 2323/02, 2324/02, 2325/02, 2326/02, 2327/02, 2328/02, 2329/02, 2330/02, 2331/02, 2332/02, 2333/02, 2334/02, 2335/02, 2336/02, 2337/02, 2338/02, 2339/02, 2340/02, 2341/02, 2342/02, 2343/02, 2344/02, 2345/02, 2346/02, 2347/02, 2348/02, 2349/02, 2350/02, 2351/02, 2352/02, 2353/02, 2354/02, 2355/02, 2356/02, 2357/02, 2358/02, 2359/02, 2360/02, 2361/02, 2362/02, 2363/02, 2364/02, 2365/02, 2366/02, 2367/02, 2368/02, 2369/02, 2370/02, 2371/02, 2372/02, 2373/02, 2374/02, 2375/02, 2376/02, 2377/02, 2378/02, 2379/02, 2380/02, 2381/02, 2382/02, 2383/02, 2384/02, 2385/02, 2386/02, 2387/02, 2388/02, 2389/02, 2390/02, 2391/02, 2392/02, 2393/02, 2394/02, 2395/02, 2396/02, 2397/02, 2398/02, 2399/02, 2400/02, 2401/02, 2402/02, 2403/02, 2404/02, 2405/02, 2406/02, 2407/02, 2408/02, 2409/02, 2410/02, 2411/02, 2412/02, 2413/02, 2414/02, 2415/02, 2416/02, 2417/02, 2418/02, 2419/02, 2420/02, 2421/02, 2422/02, 2423/02, 2424/02, 2425/02, 2426/02, 2427/02, 2428/02, 2429/02, 2430/02, 2431/02, 2432/02, 2433/02, 2434/02, 2435/02, 2436/02, 2437/02, 2438/02, 2439/02, 2440/02, 2441/02, 2442/02, 2443/02, 2444/02, 2445/02, 2446/02, 2447/02, 2448/02, 2449/02, 2450/02, 2451/02, 2452/02, 2453/02, 2454/02, 2455/02, 2456/02, 2457/02, 2458/02, 2459/02, 2460/02, 2461/02, 2462/02, 2463/02, 2464/02, 2465/02, 2466/02, 2467/02, 2468/02, 2469/02, 2470/02, 2471/02, 2472/02, 2473/02, 2474/02, 2475/02, 2476/02, 2477/02, 2478/02, 2479/02, 2480/02, 2481/02, 2482/02, 2483/02, 2484/02, 2485/02, 2486/02, 2487/02, 2488/02, 2489/02, 2490/02, 2491/02, 2492/02, 2493/02, 2494/02, 2495/02, 2496/02, 2497/02, 2498/02, 2499/02, 2500/02, 2501/02, 2502/02, 2503/02, 2504/02, 2505/02, 2506/02, 2507/02, 2508/02, 2509/02, 2510/02, 2511/02, 2512/02, 2513/02, 2514/02, 2515/02, 2516/02, 2517/02, 2518/02, 2519/02, 2520/02, 2521/02, 2522/02, 2523/02, 2524/02, 2525/02, 2526/02, 2527/02, 2528/02, 2529/02, 2530/02, 2531/02, 2532/02, 2533/02, 2534/02, 2535/02, 2536/02, 2537/02, 2538/02, 2539/02, 2540/02, 2541/02, 2542/02, 2543/02, 2544/02, 2545/02, 2546/02, 2547/02, 2548/02, 2549/02, 2550/02, 2551/02, 2552/02, 2553/02, 2554/02, 2555/02, 2556/02, 2557/02, 2558/02, 2559/02, 2560/02, 2561/02, 2562/02, 2563/02, 2564/02, 2565/02, 2566/02, 2567/02, 2568/02, 2569/02, 2570/02, 2571/02, 2572/02, 2573/02, 2574/02, 2575/02, 2576/02, 2577/02, 2578/02, 2579/02, 2580/02, 2581/02, 2582/02, 2583/02, 2584/02, 2585/02, 2586/02, 2587/02, 2588/02, 2589/02, 2590/02, 2591/02, 2592/02, 2593/02, 2594/02, 2595/02, 2596/02, 2597/02, 2598/02, 2599/02, 2600/02, 2601/02, 2602/02, 2603/02, 2604/02, 2605/02, 2606/02, 2607/02, 2608/02, 2609/02, 2610/02, 2611/02, 2612/02, 2613/02, 2614/02, 2615/02, 2616/02, 2617/02, 2618/02, 2619/02, 2620/02, 2621/02, 2622/02, 2623/02, 2624/02, 2625/02, 2626/02, 2627/02, 2628/02, 2629/02, 2630/02, 2631/02, 2632/02, 2633/02, 2634/02, 2635/02, 2636/02, 2637/02, 2638/02, 2639/02, 2640/02, 2641/02, 2642/02, 2643/02, 2644/02, 2645/02, 2646/02, 2647/02, 2648/02, 2649/02, 2650/02, 2651/02, 2652/02, 2653/02, 2654/02, 2655/02, 2656/02, 2657/02, 2658/02, 2659/02, 2660/02, 2661/02, 2662/02, 2663/02, 2664/02, 2665/02, 2666/02, 2667/02, 2668/02, 2669/02, 2670/02, 2671/02, 2672/02, 2673/02, 2674/02, 2675/02, 2676/02, 2677/02, 2678/02, 2679/02, 2680/02, 2681/02, 2682/02, 2683/02, 2684/02, 2685/02, 2686/02, 2687/02, 2688/02, 2689/02, 2690/02, 2691/02, 2692/02, 2693/02, 2694/02, 2695/02, 2696/02, 2697/02, 2698/02, 2699/02, 2700/02, 2701/02, 2702/02, 2703/02, 2704/02, 2705/02, 2706/02, 2707/02, 2708/02, 2709/02, 2710/02, 2711/02, 2712/02, 2713/02, 2714/02, 2715/02, 2716/02, 2717/02, 2718/02, 2719/02, 2720/02, 2721/02, 2722/02, 2723/02, 2724/02, 2725/02, 2726/02, 2727/02, 2728/02, 2729/02, 2730/02, 2731/02, 2732/02, 2733/02, 2734/02, 2735/02, 2736/02, 2737/02, 2738/02, 2739/02, 2740/02, 2741/02, 2742/02, 2743/02, 2744/02, 2745/02, 2746/02, 2747/02, 2748/02, 2749/02, 2750/02, 2751/02, 2752/02, 2753/02, 2754/02, 2755/02, 2756/02, 2757/02, 2758/02, 2759/02, 2760/02, 2761/02, 2762/02, 2763/02, 2764/02, 2765/02, 2766/02, 2767/02, 2768/02, 2769/02, 2770/02, 2771/02, 2772/02, 2773/02, 2774/02, 2775/02, 2776/02, 2777/02, 2778/02, 2779/02, 2780/02, 2781/02, 2782/02, 2783/02, 2784/02, 2785/02, 2786/02, 2787/02, 2788/02, 2789/02, 2790/02, 2791/02, 2792/02, 2793/02, 2794/02, 2795/02, 2796/02, 2797/02, 2798/02, 2799/02, 2800/02, 2801/02, 2802/02, 2803/02, 2804/02, 2805/02, 2806/02, 2807/02, 2808/02, 2809/02, 2810/02, 2811/02, 2812/02, 2813/02, 2814/02, 2815/02, 2816/02, 2817/02, 2818/02, 2819/02, 2820/02, 2821/02, 2822/02, 2823/02, 2824/02, 2825/02, 2826/02, 2827/02, 2828/02, 2829/02, 2830/02, 2831/02, 2832/02, 2833/02, 2834/02, 2835/02, 2836/02, 2837/02, 2838/02, 2839/02, 2840/02, 2841/02, 2842/02, 2843/02, 2844/02, 2845/02, 2846/02, 2847/02, 2848/02, 2849/02, 2850/02, 2851/02, 2852/02, 2853/02, 2854/02, 2855/02, 2856/02, 2857/02, 2858/02, 2859/02, 2860/02, 2861/02, 2862/02, 2863/02, 2864/02, 2865/02, 2866/02, 2867/02, 2868/02, 2869/02, 2870/02, 2871/02, 2872/02, 2873/02, 2874/02, 2875/02, 2876/02, 2877/02, 2878/02, 2879/02, 2880/02, 2881/02, 2882/02, 2883/02, 2884/02, 2885/02, 2886/02, 2887/02, 2888/02, 2889/02, 2890/02, 2891/02, 2892/02, 2893/02, 2894/02, 2895/02, 2896/02, 2897/02, 2898/02, 2899/02, 2900/02, 2901/02, 2902/02, 2903/02, 2904/02, 2905/02, 2906/02, 2907/02, 2908/02, 2909/02, 2910/02, 2911/02, 2912/02, 2913/02, 2914/02, 2915/02, 2916/02, 2917/02, 2918/02, 2919/02, 2920/02, 2921/02, 2922/02, 2923/02, 2924/02, 2925/02, 2926/02, 2927/02, 2928/02, 2929/02, 2930/02, 2931/02, 2932/02, 2933/02, 2934/02, 2935/02, 2936/02, 2937/02, 2938/02, 2939/02, 2940/02, 2941/02, 2942/02, 2943/02, 2944/02, 2945/02, 2946/02, 2947/02, 2948/02, 2949/02, 2950/02, 2951/02, 2952/02, 2953/02, 2954/02, 2955/02, 2956/02, 2957/02, 2958/02, 2959/02, 2960/02, 2961/02, 2962/02, 2963/02, 2964/02, 2965/02, 2966/02, 2967/02, 2968/02, 2969/02, 2970/02, 2971/02, 2972/02, 2973/02, 2974/02, 2975/02, 2976/02, 2977/02, 2978/02, 2979/02, 2980/02, 2981/02, 2982/02, 2983/02, 2984/02, 2985/02, 2986/02, 2987/02, 2988/02, 2989/02, 2990/02, 2991/02, 2992/02, 2993/02, 2994/02, 2995/02, 2996/02, 2997/02, 2998/02, 2999/02, 3000/02, 3001/02, 3002/02, 3003/02, 3004/02, 3005/02, 3006/02, 3007/02, 3008/02, 3009/02, 3010/02, 3011/02, 3012/02, 3013/02, 3014/02, 3015/02, 3016/02, 3017/02, 3018/02, 3019/02, 3020/02, 3021/02, 3022/02, 3023/02, 3024/02, 3025/02, 3026/02, 3027/02, 3028/02, 3029/02, 3030/02, 3031/02, 3032/02, 3033/02, 3034/02, 3035/02, 3036/02, 3037/02, 3038/02, 3039/02, 3040/02, 3041/02, 3042/02, 3043/02, 3044/02, 3045/02, 3046/02, 3047/02, 3048/02, 3049/02, 3050/02, 3051/02, 3052/02, 3053/02, 3054/02, 3055/02, 3056/02, 3057/02, 3058/02, 3059/02, 3060/02, 3061/02, 3062/02, 3063/02, 3064/02, 3065/02, 3066/02, 3067/02, 3068/02, 3069/02, 3070/02, 3071/02, 3072/02, 3073/02, 3074/02, 3075/02, 3076/02, 3077/02, 3078/02, 3079/02, 3080/02, 3081/02, 3082/02, 3083/02, 3084/02, 3085/02, 3086/02, 3087/02, 3088/02, 3089/02, 3090/02, 3091/02, 3092/02, 3093/02, 3094/02, 3095/02, 3096/02, 3097/02, 3098/02, 3099/02, 3100/02, 3101/02, 3102/02, 3103/02, 3104/02, 3105/02, 3106/02, 3107/02, 3108/02, 3109/02, 3110/02, 3111/02, 3112/02, 3113/02, 3114/02, 3115/02, 3116/02, 3117/02, 3118/02, 3119/02, 3120/02, 3121/02, 3122/02, 3123/02, 3124/02, 3125/02, 3126/02, 3127/02, 3128/02, 3129/02, 3130/02, 3131/02, 3132/02, 3133/02, 3134/02, 3135/02, 3136/02, 3137/02, 3138/02, 3139/02, 3140/02, 3141/02, 3142/02, 3143/02, 3144/02, 3145/02, 3146/02, 3147/02, 3148/02, 3149/02, 3150/02, 3151/02, 3152/02, 3153/02, 3154/02, 3155/02, 3156/02, 3157/02, 3158/02, 3159/02, 3160/02, 3161/02, 3162/02, 3163/02, 3164/02, 3165/02, 3166/02, 3167/02, 3168/02, 3169/02, 3170/02, 3171/02, 3172/02, 3173/02, 3174/02, 3175/02, 3176/02, 3177/02, 3178/02, 3179/02, 3180/02, 3181/02, 3182/02, 3183/02, 3184/02, 3185/02, 3186/02, 3187/02, 3188/02, 3189/02, 3190/02, 3191/02, 3192/02, 3193/02, 3194/02, 3195/02, 3196/02, 3197/02, 3198/02, 3199/02, 3200/02, 3201/02, 3202/02, 3203/02, 3204/02, 3205/02, 3206/02, 3207/02, 3208/02, 3209/02, 3210/02, 3211/02, 3212/02, 3213/02, 3214/02, 3215/02, 3216/02, 3217/02, 3218/02, 3219/02, 3220/02, 3221/02, 3222/02, 3223/02, 3224/02, 3225/02, 3226/02, 3227/02, 3228/02, 3229/02, 3230/02, 3231/02, 3232/02, 3233/02, 3234/02, 3235/02, 3236/02, 3237/02, 3238/02, 3239/02, 3240/02, 3241/02, 3242/02, 3243/02, 3244/02, 3245/02, 3246/02, 3247/02, 3248/02, 3249/02, 3250/02, 3251/02, 3252/02, 3253/02, 3254/02, 3255/02, 3256/02, 3257/02, 3258/02, 3259/02, 3260/02, 3261/02, 3262/02, 3263/02, 3264/02, 3265/02, 3266/02, 3267/02, 3268/02, 3269/02, 3270/02, 3271/02, 3272/02, 3273/02, 3274/02, 3275/02, 3276/02, 3277/02, 3278/02, 3279/02, 3280/02, 3281/02, 3282/02, 3283/02, 3284/02, 3285/02, 3286/02, 3287/02, 3288/02, 3289/02, 3290/02, 3291/02, 3292/02, 3293/02, 3294/02, 3295/02, 3296/02, 3297/02, 3298/02, 3299/02, 3300/02, 3301/02, 3302/02, 3303/02, 3304/02, 3305/02, 3306/02, 3307/02, 3308/02, 3309/02, 3310/02, 3311/02, 3312/02, 3313/02, 3314/02, 3315/02, 3316/02, 3317/02, 3318/02, 3319/02, 3320/02, 3321/02, 3322/02, 3323/02, 3324/02, 3325/02, 3326/02, 3327/02, 3328/02, 3329/02, 3330/02, 3331/02, 3332/02, 3333/02, 3334/02, 3335/02, 3336/02, 3337/02, 3338/02, 3339/02, 3340/02, 3341/02, 3342/02, 3343/02, 3344/02, 3345/02, 3346/02, 3347/02, 3348/02, 3349/02, 3350/02, 3351/02, 3352/02, 33 | | | |